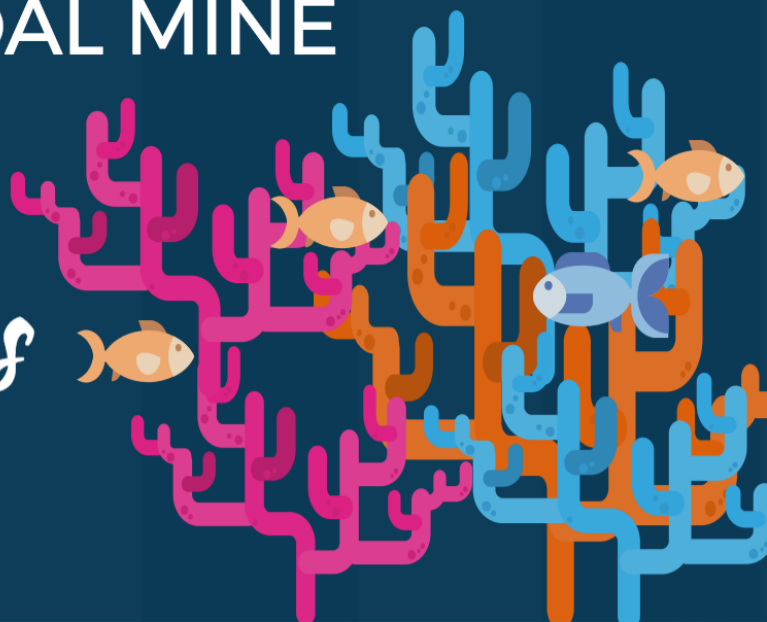


# ADANI COAL MINE



## THE GREAT BARRIER REEF

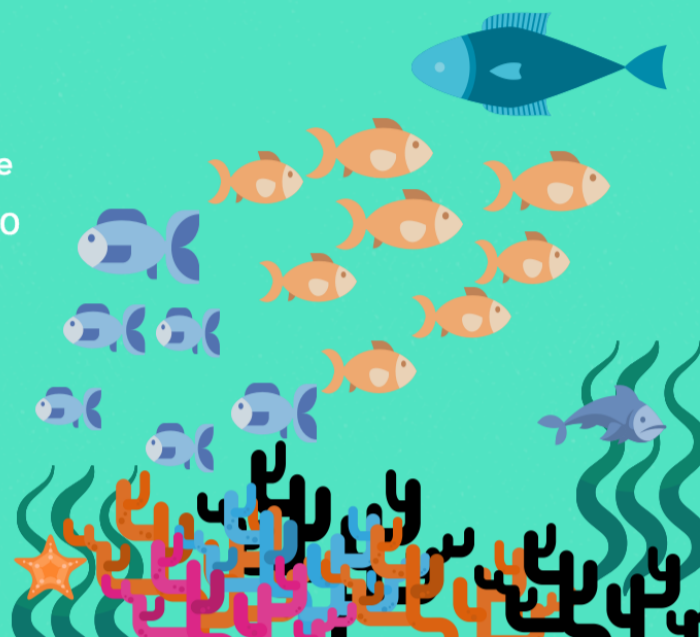
The Great Barrier reef is a World Heritage Area, it:

- is located on Australia's north-east coast
- is more than 2,300km along the Queensland coastline
- covers 344,000 km sq
- includes 3000 coral reefs, 600 continental islands, 300 coral cays and 150 inshore mangrove islands

The GBR is home to:

- more than 1,500 species of fish
- 6 species of turtles
- 17 species of sea snakes
- 30 species of whales, dolphins and porpoises, and
- 215 species of birds

In 2016-7 the GBR has been adversely affected by coral bleaching events as a result of climate change and El Nino.



## DEVELOPMENT VS. THE REEF

 <ul style="list-style-type: none"> <li>- more developments along the coastline</li> <li>- increased runoff</li> <li>- more hard surfaces</li> </ul> <p><b>Population pressure</b></p>	<ul style="list-style-type: none"> <li>- land clearing</li> <li>- increased sediment and fertiliser in runoff</li> </ul>  <p><b>Agriculture</b></p>	 <ul style="list-style-type: none"> <li>- discharges,</li> <li>- sediment,</li> <li>- disturbance of marine life,</li> <li>- changes to hydrodynamics of seabed</li> </ul> <p><b>Industry and dredging</b></p>
--	--	---







## ADANI GROUP

Adani Group operates mines, ports and powerplants in India, Indonesia and Australia.

The company is proposing to build the Carmichael mine in the Galilee basin, west of Rockhampton.

The Carmichael mine will:

- be Australia's biggest coal mine,
- have six open cut pits,
- have five underground mines,
- operate for between 25-60 years
- require construction of a new rail line to transport coal, and
- send coal for processing to Abbott Point Coal Terminal.

 <p>Coal exports to India will triple.</p>  <p>Operating workforce of 3,920 jobs.</p>  <p>Economic stimulus spread to regional cities by FIFO workers (fly in fly out).</p>  <p>The remote Galilee basin will be opened up for development.</p>  <p>Impacts of Government revenue (income and company tax), will spread economic benefits across the state.</p>	 <p><b>ADANI</b></p> <p><i>vs</i></p> 	<p>Billions of tonnes of pollution will be created. </p> <p>The GBR will be put at risk, threatening a \$1 billion tourist industry. </p> <p>Dredging will dig up, transport and dump sediment in the reef or in close proximity to it. </p> <p>Coal dust and fragments from coal loaders can have a toxic effect on corals </p> <p>Carbon dioxide emitted from coal from the Carmichael mine will add to heat in the atmosphere and ocean acidification. </p>
---	--	---